

ETE-RT-T80

Ruggedized In-vehicle Android Touch Screen Tablet



Features

High Level Protection

Ruggedized (IP67)

Various Video functions

Playback, Snapshot, Setup for KDM2410M-V21 and SVR2420

High Performance

Android 7.0 inch
In-Vehicle 8-inch Touch Screen display
3G/4G/LTE, Wi-Fi, GPS, NFC, USB

Abundant Functions and Features

2MP Front camera, 5MP Rear camera
TF card slot (SDHC/SDXC), HDMI input

Portable and Light

221*145*15mm, 600g

Specifications

ETE-RT-T80	
System	
CPU	MTK8783(8core)
OS	Android 7.0
RAM	2G DDR3L
Display	
LCD	8inch 5-point Touch screen (16:10 1280x800 IPS)
Camera	
Resolution	Front 2.0MP, Rear 5.0MP
Storage	
Flash	16GB (64G/128GB optional)
TF Storage	Support SDHC/SDXC
Battery	
Capacity	3.7V/7500mAH
Audio	
Speaker	Built-in8Ω/0.8W x 1
Network	
4G LTE	TDD(B38,B39,B40,B41) FDD(B1,B2,B3,B4,B5,B7,B8,B17,B20)
3G	WCDMA(900/2100MHz)
GSM(2G)	900/1800MHz
Wi-Fi	802.11 b/g/n/ac (2.4G/5G dual frequency Wi-Fi)
Bluetooth	BT4.0
NFC	13.56MHZ (MT6605EN/B)
GPS	Support (MT6625LN)
Interface	
Straps	Back of shell extensible belt, convenient one hand grip
SIM Card	1pcs Micro SIM card
HDMI	HDMI 1.4a Type C x1
Size/Weight	221*145*15MM/600g
Accessories	
Standard	Normal adapter, USB cable, Package

ETE-RT-i80H



Ruggedized In-vehicle Windows Touch Screen Tablet



Features

High Level Protection

Ruggedized (IP67)

Various Video functions

Playback, Snapshot, Setup for KDM2410M-V21 and SVR2420

High Performance

Windows 10 /Android 5.1
In-Vehicle 8-inch Touch Screen display
3G/2G, Wi-Fi, GPS, USB

Abundant Functions and Features

2MP Front camera, 5MP Rear camera
TF card slot (SDHC/SDXC), HDMI input

Portable and Light

221*145*15mm, 600g

Specifications

ETE-RT-i80H	
System	
CPU	Intel Cherry Trail Z8350, 1.33-1.8GHz
OS	Windows 10 /Android 5.1
RAM	2G DDR3L
Display	
LCD	8inch (10:16 1280x800 IPS) 380 Lumen
Camera	
Resolution	Front 2.0MP, Rear 5.0MP
Storage	
Flash	32GB (64G/128GB optional)
TF Storage	Support SDHC/SDXC
Battery	
Capacity	3.7V/7500mAH
Audio	
Speaker	Built-in8Ω/0.8W x 1
Network	
3G	WCDMA(900/2100MHz)
GSM(2G)	900/1800MHz
Wi-Fi	802.11 b/g/n/ac (2.4G/5G dual frequency Wi-Fi)
Bluetooth	BT4.0
GPS	Support BDS & GPS dual model
Interface	
Straps	Back of shell extensible belt, convenient one hand grip
SIM Card	1pc Micro SIM card
HDMI	HDMI 1.4a
Size/Weight	221*145*15MM/600g
Accessories	
Standard	Normal adapter, USB cable, Package

ETE-RT-i22k

Ruggedized In-vehicle 12inch Touch Screen Tablet



Features

High Level Protection

Ruggedized (IP65)

Various Video functions

Playback, Snapshot, Setup for KDM2410M-V21 and SVR2420

High Performance

Windows 10 IOT 64bit Enterprise
In-Vehicle 12.2inch Touch Screen display
3G/WiFi

Abundant Functions and Features

2MP Front camera, 5MP Rear camera
GPS, G-sensor, NFC, 2*USB 2.0, 1* USB 3.0
64GB SSD

Portable and Light

319.6*216*20.4mm, 1500g, with car holder and key board

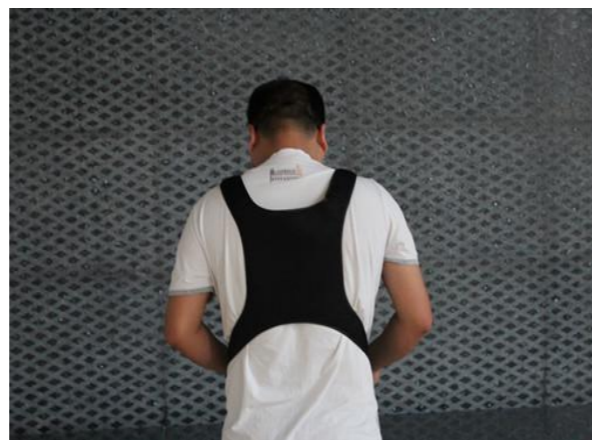
Docking Station



Specifications

ETE-RT-i22k	
System	
CPU	Intel®Kabylake Core™ m3-7Y30 4M Cache, up to 2.60 GHz
OS	Windows 10 IOT 64bit Enterprise
RAM	DDR3L 4G
Display	
LCD	12.2inch 1920*1200 IPS, Brightness: 280cd/m ²
GPU	Intel® HD Graphics 515
Camera	
Resolution	Front 2.0MP, Rear 5.0MP
Storage	
SSD	NGFF SSD 64GB
Battery	
Capacity	3.7V/13000mAh removeable battery
Audio	
Speaker	Built-in8Ω/0.8W x 1
Network	
3G	FIBOCOM H380 WCDMA 900 MHz/2100 MHz
GSM(2G)	GSM/GPRS/EDGE: 900MHz/1800 MHz
Wi-Fi	WIFI 802.11(a/b/g/n) 2.4G+5.8G dual WIFI
Bluetooth	BT4.0 (BLE) class1.5 transmitter distance: 10m
Navigation	U-blox Module NEO-7, GLONASS, QZSS, GPS; capturing sensitivity: -160 dBm (Optional BDS/GPS dual model)
Support	Electronic compass, Gyroscope, G-Sensor
Interface	
I/O port	USB 2.0*2 (4pin) (Host) for windows Android OTG x1, USB 3.0*1 (9pin), MICRO USB x1, ϕ3.5mm standard headphone port
HDMI	Micro HDMI 1.4a
Size/Weight	319.6*216*23.4 mm/1500g
Accessories	
Standard	Adapter, USB cable, Bracket, Package

Shoulder strap



Straps: Extensible belt on the back case, convenient to hold



ETE-RT-i22k

Ruggedized in-vehicle 12inch Touch Screen Tablet



Car Holder

Material: Aluminum alloy, Aluminum alloy Tube Size: 138mm, Aluminum alloy Tube weight: 3kgs

Material: Aluminum alloy; Aluminum alloy Tube Size: 170mm, Aluminum alloy Tube weight: 3kgs



Keyboard

Material: keyboard ABS+PC Leather, Bracket: Stainless steel +TPU;

Keyboard: 23.5cm(W)*37cm(L), Bracket: 11.5cm(W)*18.4cm(L); Weight:604g



ETE-RT-i10H

Ruggedized In-vehicle Touch Screen Tablet



Features

High Level Protection

Ruggedized (IP67)

Various Video functions

Playback, Snapshot, Setup for KDM2410M-V21 and SVR2420

High Performance

Android 5.1/ Windows 10 Home/ Pro
In-Vehicle 10.1-inch Touch Screen display
3G/ Wi-Fi, GPS, USB

Abundant Functions and Features

2MP Front camera, 5MP Rear camera
TF card slot (SDHC/SDXC), HDMI input

Portable and Light

278*186*26mm /1200g

Specifications

ETE-RT-i10H	
System	
CPU	Cherry Trail Z8350
OS	Android 5.1, Option windows 10 Home/ Pro
RAM	2G DDR3L
Display	
LCD	10.1" 10 points touch screen (10:16 1280x800 IPS)
Camera	
Resolution	Front 2.0MP, Rear 5.0MP
Storage	
Flash	32GB
TF Storage	Support SDHC/SDXC x1: 64GB
Battery	
Capacity	Lithium-ion polymer 10,000mAh 3.7V, 8hrs (default 50% volume, Default 200 lumens brightness, Play 1080P HD video)
Audio	
Speaker	Built-in 8Ω/0.8W water-proof speaker x2
Network	
3G	WCDMA(900/2100MHz)
GSM(2G)	900/1800MHz HSDPA 7.2Mbps, HSUPA 5.7Mbps, LGA interface
Wi-Fi	WIFI 802.11(a/b/g/n) Frequency:2.4G+5.8G dual band WIFI
Bluetooth	BT4.0 (BLE) class1 transmission distance: 10m
GPS	Support BDS/GPS dual model
Interface	
USB	USB OTG (Micro USB + Standard USB)
HDMI	Micro HDMI 1.4a
Size/Weight	278*186*26mm /1200g
Earphone	3.5mm standard
Accessories	
Standard	Adapter, USB cable, Bracket, Package

ETE-RT-i86H

Ruggedized In-vehicle Touch Screen Tablet



Features

High Level Protection

Ruggedized (IP67)

Various Video functions

Playback, Snapshot, Setup for KDM2410M-V21 and SVR2420

High Performance

Android 5.1/ Windows 10 Home /Windows 10 Pro
In-Vehicle 8-inch Touch Screen display

3G/2G, Wi-Fi, GPS, NFC, USB

Abundant Functions and Features

2MP Front camera, 5MP Rear camera
TF card slot (SDHC/SDXC), HDMI input
Barcode scanner

Portable and Light

214mm*138.60mm*22mm/650g

Docking Station



Specifications

ETE-RT-i86H	
System	
CPU	Intel Cherry Trail Z8350
OS	Android 5.1/ Windows 10 Home/ Optional Windows 10 Pro
RAM	4G DDR3L
Display	
LCD	8inch (10:16 1280x800 IPS) 380 Lumen
Camera	
Resolution	Front 2.0MP, Rear 5.0MP
Storage	
Flash	64GB
TF Storage	Support SDHC/SDXC
Battery	
Capacity	3.7V/8500mAH
Audio	
Speaker	Built-in8Ω/0.8W x 1
Network	
3G	WCDMA(900/2100MHz)
GSM(2G)	GSM 900/1800; HSDPA 7.2Mbps, HSUPA 5.7Mbps, LGA interface
Wi-Fi	802.11 b/g/n/ac (2.4G/5G dual frequency Wi-Fi)
Bluetooth	BT4.0
GPS	U-BLOX, GPS and GLONASS
NFC	Support NFC (Optional)
Interface	
Straps	Back of shell extensible belt, convenient one hand grip
SIM Card	1pc Micro SIM card
HDMI	Micro HDMI 1.4a
Size/Weight	214mm*138.60mm*22mm/650g
Headphone	3.5mm
Barcode	MOTO chip (Support 1D or 2D). Optional to do
I/O port	USB OTG/ Micro HDMI 1.4a/ 3*USB Extend docking, support Ethernet
Accessories	
Standard	Normal adapter, USB cable, Package

ETE-RT-i10k

Ruggedized In-vehicle Windows Touch Screen Tablet



Features

High Level Protection
Ruggedized (IP67)

Various Video functions
Playback, Snapshot, Setup for KDM2410M-V21 and SVR2420

High Performance
Windows 10
In-Vehicle 10.1-inch Touch Screen display
3G/2G, Wi-Fi, GPS, USB

Abundant Functions and Features
2MP Front camera, 5MP Rear camera
TF card slot (SDHC/SDXC), HDMI input

Portable and Light
278*186*26mm /1200g

Docking Station



Specifications

ETE-RT-i10k	
System	
CPU	Intel®kabylake-Y Core™ m3-7Y30
OS	Windows 10
RAM	4G DDR3L
Display	
LCD	10.1" 10 points touchscreen (1200×RGB (3)×1920)
Camera	
Resolution	Front 2.0MP, Rear 5.0MP
Storage	
Flash	SSD 128GB
TF Storage	Support SDHC/SDXC x1 Max: 128GB
Battery	
Capacity	7.4V/5000mAH
Audio	
Speaker	Built-in8Ω/0.8W x 1
Network	
3G	WCDMA (850&900&1900&2100MHz), HSDPA 21Mbps,HSUPA 5.76 Mbps
GSM(2G)	GSM/GPRS/EDGE Band(850&900&1800&1900 MHZ)
Wi-Fi	802.11 a/b/g/n/ac (2.4G+5.8G dual band Wi-Fi)
Bluetooth	BT4.1
GPS	U-BLOX NEO-7, GPS and GLONASS
Interface	
SIM Card	1pc Micro SIM card
HDMI	Micro HDMI 1.4a
Size/Weight	278*186*26mm /1200g
Headphone	3.5mm
I/O port	USB micro 5P L=1.2M
Accessories	
Standard	Normal adapter, USB cable, Straps, Package

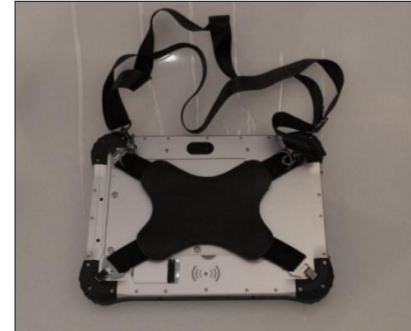
Car Holder



Handwriting Pen



Shoulder Girdle



Hand Straps



Car Charger



Car Holder (could be charging)



ETE-RT-X11

Ruggedized In-vehicle 2 in 1 Windows Touch Screen Tablet



Features

High Level Protection

Ruggedized (IP67)

Various Video functions

Playback, Snapshot, Setup for KDM2410M-V21 and SVR2420

High Performance

Windows 10 Home 64 Bit
In-Vehicle 11.6-inch Touch Screen display
4G LTE/3G/2G, Wi-Fi, GPS, USB, HDMI

Abundant Functions and Features

2MP Front camera, 8MP Rear camera
TF card slot (SDHC/SDXC), HDMI input
Compass, Gyroscope, G-sensor, Honeywell switch hall

Portable and Light

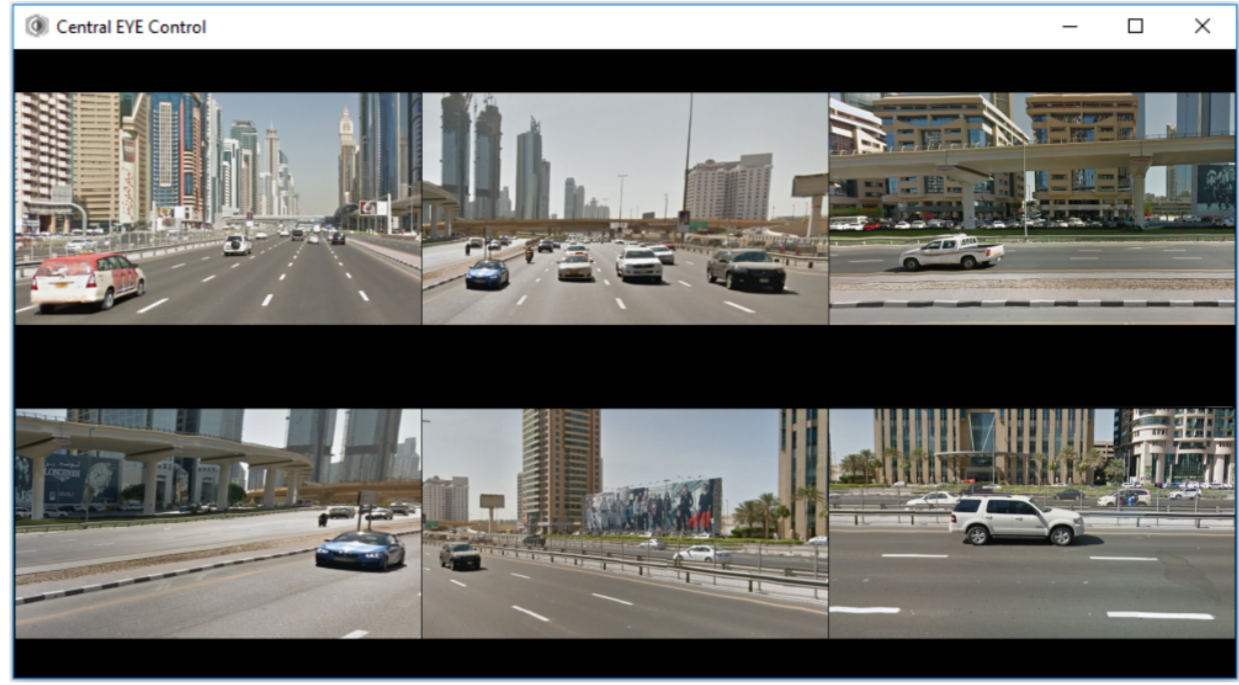
305*205*16.5 mm (host)/300g

Specifications

ETE-RT-X11	
System	
CPU	Intel®skylake Core™ m3-7Y30 ,4M Cache, 2.60 GHz. GPU: Intel® HD Graphics 515
OS	Windows 10 Home 64bit
RAM	8GB DDR3L
Display	
LCD	11.6 inch 16:9 1920(H)×1080(V) ,350cd/m²
Touch Panel	G+G, Corelle gorilla, hardness over 7H, scratch resistant, Support windows ink
Camera	
Resolution	Front 2.0MP, Rear 8.0MP
Storage	
Flash	128GB NGFF SSD
TF Storage	Support SDHC/SDXC Max:64GB
Battery	
Capacity	Host 5000mHA/7.4V, Keyboard Battery 6300mHA/7.4V
Sensor	
Multi-function Sensors	Compass, Gyroscope, G-sensor, Honeywell switch hall
Audio	
Speaker	Embedded 8Ω/0.8W Waterproof Box horn x1, Sensitivity: -42db, Output impedance2.2kΩ
Network	
4G LTE	Optional
3G	WCDMA Band(850&900&1900&2100MHz), HSDPA 21Mbps, HSUPA 5.76 Mbps
GSM(2G)	FIBOCOM_H380 M.2 GSM/GPRS/EDGE Band(850&900&1800&1900MHZ)
Wi-Fi	WIFI 802.11(a/b/g/n/ac), Frequency: 2.4G+5.8G double frequency
Bluetooth	BT4.0 (BLE) class1 transmission distance:10m
GPS	U-blox NEO-7, GLONASS, QZSS, GPS; acquisition, Sensitivity: -160 dBm; Cold start
Interface	
SIM Card	1pc Micro SIM card
HDMI	Micro HDMI 1.4a
Size/Weight	305*205*16.5 mm (host)/300g
Headphone	3.5mm
I/O port	Micro USB 3.0 x1, USB2.0 x2, HDMI C x1, DC 12V 4A Power interface x1
Protection	
Waterproof	a. Nozzle bore: 6.3mm; b. Water flow: 12.5 + 0.625L/min; c. Water pressure: according to the regulation of water flow regulation; d. The main part of the main flow: a circle about 40mm in diameter from the nozzle 2.5m; e. Shell surface water per square meter: About 1min; F. test time: at least 3min; g. Nozzle to shell surface distance: 2.5 ~ 3m. After test, the sample is not flooded
Accessories	
Standard	Adaptor, Keyboard, USB cable, Package

CEC Camera Viewer

Central EYE Control In-vehicle Camera Viewer



Features

Real-time Streaming

CEC Camera Viewer, views and control cameras connected to the In-Vehicle NVR

Communication

Any ONVIF device connected to the same network or have a NAT with the device network can be viewed

Ease of Use

After preparing the XML database file, user only need to open the application and the camera will stream automatically

Specifications

CEC Camera Viewer	
Capacity	
Max. Number of Simultaneous streams	Up to 6
Basic Functions	
Camera streaming	Streaming from the camera directly to the software
PTZ Control	Easy User Interface to control PTZ Camera with some useful functions
Ease of use	After configuring the database, the application will stream the cameras when its open
Network Protocols	
TCP/IP, RTSP	The protocol is used to connect to the ONVIF Camera
Ports	554 for RTSP stream 80 for ONVIF
System Requirements (Hardware)	
CPU	Min. Intel i5-5500U
RAM	Min. 4GB
Storage	Min. 200MB
System Requirements (Software)	
Supported Operating System	Windows 7 and above
Database	Stored inside main device as XML

CEC 3rd Party Plugin

Central EYE Control VMS Plugin



Specifications

CEC 3 rd Party Plugin	
Capacity	
Max Number of Simultaneous streams	Up to 64
Basic Functions	
Camera streaming	Streaming from Kedacom server directly to the 3 rd party plugin
PTZ Control	Easy User Interface to control PTZ Camera with some useful functions
Log Data	Data saved in XML log file
Ease of use	All functions done in the background and the main application will only need to call the plugin
Network Protocols	
TCP/IP	The protocol is used to connect to Kedacom server
Ports	5510 TCP and UDP 12000 TCP and UDP 80 TCP
System Requirements (Hardware)	
CPU	Min. Intel i5-5500U
RAM	Min. 4GB
Storage	Min. 100MB
System Requirements (Software)	
Supported Operating System	Windows 7 and up
Database	Stored inside main device as XML

Features

Real-time Streaming

CEC Plugin uses streams from Kedacom server to view them outside of the main VMS Client

Communication

Any device connected to Kedacom Server (3G/4G or WIFI) can be viewed by CEC Plugin

Ease of Use

After preparing the XML database file, user only needs the device ID name, and everything is done in the background to stream the camera